



## VHF White MAXRAD Fiberglass Base Station (MFB) Omnidirectional Antennas

The 144-174 MHz white fiberglass antenna series consists of base matched half wave antennas encapsulated in a heavy duty fiberglass radomes with a thick walled aluminum mounting base for reliable long term use. All models are DC grounded and UPS shippable.

### Features

- Effective "J" pole design requires no radials or ground plane
- White ultra-violet resistant pultruded fiberglass radome
- Thick-walled aluminum mounting base
- Unity/3 dB models
- UPS shippable



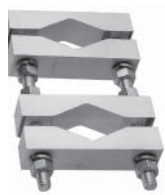
### Technical Data

Maximum Power: 250 watts
Normal Impedance: 50 ohms
VSWR: < 1.5:1 VSWR
Radome Material: Pultruded white fiberglass
Radiator Material: Coated steel wire
ESD Protection: DC grounded
Wind Survival: 100 mph
Termination: N male with 16" jumper
Mounting Base Diameter: 1-5/16"
Mounting Method: (Sold separately) MMK3: light duty mast mounting MMK4: heavy duty mast mounting MMK9: Aluminum mast mount for 1-5/16" OD antennas (two required with the 10" sleeve antenna models) MBSWM: wall mounting bracket (2 required)

MFB VHF Unity Model 3 dB version includes exposed whip



MMK3



MMK4



MMK9



MBSWM

## Antenna Electrical Specifications

Model	Frequency Range	Factory Tuned Frequency	Gain	Bandwidth @ 1.5:1 VSWR	Vertical Beamwidth @ 1/2 Power
MFB1443	144-150 MHz	144 MHz	3 dB*	3.5 MHz	29°
MFB1500	150-156 MHz	153 MHz	Unity	3.0 MHz	80°
MFB1503	150-156 MHz	150 MHz	3 dB*	3.5 MHz	29°
MFB1560	156-162 MHz	159 MHz	Unity	3.0 MHz	80°
MFB1563	156-162 MHz	156 MHz	3 dB*	3.5 MHz	29°
MFB1683	168-174 MHz	168 MHz	3 dB*	3.5 MHz	29°

## Mechanical Specifications

Model	Height	Weight (Mass)	Bending Moment at Rated Wind	Lateral Thrust at Rated Wind	Equivalent Flat Plate Area
MFB1443	129"	4 lbs	62.5 ft-lbs	15.8 lbs	.44 ft <sup>2</sup>
MFB1500	71"	3 lbs	29.2 ft-lbs	10.8 lbs	.30 ft <sup>2</sup>
MFB1503	129"	4 lbs	62.5 ft-lbs	15.8 lbs	.44 ft <sup>2</sup>
MFB1560	71"	3 lbs	29.2 ft-lbs	10.8 lbs	.30 ft <sup>2</sup>
MFB1563	129"	4 lbs	62.5 ft-lbs	15.8 lbs	.44 ft <sup>2</sup>
MFB1683	129"	4 lbs	62.5 ft-lbs	15.8 lbs	.44 ft <sup>2</sup>

\*Note: 3 dB gain antennas are factory tuned to the lowest side of the frequency range. Field tuning to the desired frequency is required. Mount sold separately. For SO-239 connector, please add \$27.00; for N female connector, please add \$10.00.