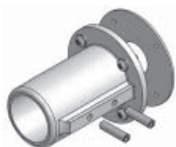
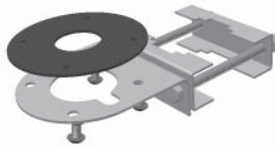




GPS-TMG-20N



GPS-TMG-MNT



GPS-TMG-LMNT



GPS-TMG-MRNMNT



Low Noise Amplifier Specifications

| |
|--|
| Frequency Band: 1575.42 center frequency 3 dB bandwidth +/- 10 MHz |
| Amplifier Gain: 20 dB +/- 3 dB |
| Nominal Impedance: 50 ohms |
| Output VSWR: < 2.0:1 |
| Maximum Noise Figure: ≤ 2.5 dB @ +25°C including pre-selector |
| DC Voltage: 3.3 - 9.0 V (regulated) |
| DC Current: 20 mA, 30 mA max @ 5V |
| Polarization: Right hand circular |
| Filtering: 3 stage filters including pre-selector |
| Out of band rejection: -60 dB @ 1575.42 +/- 50 MHz |

GPS-TMG-20N, 20 dB Internal Amplifier

The GPS-TMG-20 timing reference antennas are specifically designed for long-lasting, trouble-free deployments in congested cell-site applications. Their 20 dB high gain amplifier is well suited to address attenuation issues associated with applications requiring longer cable runs.

The proprietary quadrifilar helix design, coupled with multistage filtering provides superior out-of-band rejection and lower elevation pattern performance than traditional patch antennas.

Their unique radome shape sheds water and ice, while eliminating problems associated with bird perching. The antenna may be purchased by itself or with pipe mounting hardware. Custom models or site kits options are also available.

This antenna is made of materials that fully comply with provisions stipulated by EU directives RoHS 2002/95/EC.

This antenna also features ESD, reverse polarity protection and transit voltage suppression.

Antenna Electrical Specifications

| Frequency Band | Antenna Gain | Nominal Impedance | VSWR | Polarization |
|------------------------------|--------------|---|---------|---------------------|
| 1575.42 +/- 10 MHz | 3.5 dBic | 50 ohms | < 1.5:1 | Right hand circular |
| Connector | | Input/Output | | |
| N, female (one - bottom fed) | | <ul style="list-style-type: none"> • ESD protected • Reverse polarity protection • Transient voltage suppression on output | | |

Mechanical Specifications

| Antenna Dimensions | Shipping Dimensions | Antenna Weight | Shipping Weight | Radome Color |
|----------------------------------|---|---------------------|---------------------|--------------|
| 5" H x 3.2" D (126 H x 81 mm) | 7.5" L x 4.4" W x 3.8" D (190 x 112 x 96 mm) | 0.6 lbs (0.3 kg) | 1.9 lbs (0.9 kg) | White |

Environmental Specifications

| Temperature Range | Humidity |
|-------------------|----------|
| - 40°C to + 85°C | 95% |

Mounting

All mounting options fit pipes of 1"-1.45" (25 mm-37 mm) maximum diameter.

| Model | Options |
|---------------|--|
| GPS-TMG-20N | Does not include mounting hardware. |
| GPS-TMG-20NMS | Includes universal mounting hardware consisting of collar (GPS-TMG-MNT) and pipe clamp (GPS-TMG-LMNT). |
| GPS-TMG-20NCS | Includes economy collar mount (GPS-TMG-MRNMNT). |