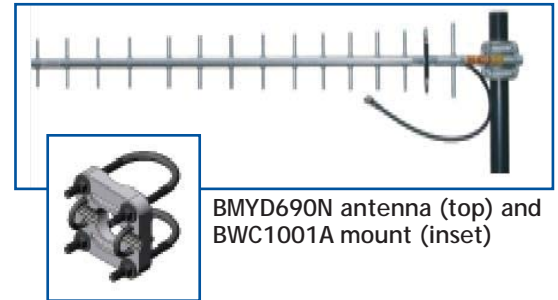


Yagi Antennas, 690-746 MHz, 13.5 dBd

The BMXD690N has been engineered to meet the requirements of a high gain, broadband, premium quality antenna. This antenna provides 13.5 dBd gain and operates in the 690-746 MHz range. The BMXD690N is manufactured using high strength 6061-T6 aluminum to withstand heavy ice, high wind and other harsh conditions. All elements are welded to the boom and the dipole design has an integral feed line welded to the boom for extra strength and electrical conductivity. This eliminates misalignment or fastener problems. The entire antenna is anodized for appearance and corrosion resistance. A heavy duty clamp is supplied which easily permits horizontal or vertical polarization. T



Features

- Elements and boom are manufactured from aircraft quality 6061-T6 aluminum for optimum strength
- Antenna is anodized for corrosion resistance
- Antenna is supplied with a 2' pigtail (RG213) and N female connector



Antenna Electrical Specifications

Model	Frequency Range	-3 dB Horizontal Beamwidth	-3 dB Vertical Beamwidth	Front to Back Ratio	Nominal Gain
BMXD690N	690-746 MHz	36°	33°	20 dB	13.5 dBd

Mechanical Specifications

Model	Dimensions (L x W)	Weight (Mass)	Cross Sectional Area	Lateral Thrust @ 100 mph	Rated Wind Velocity**
BMXD690N	60" x 8.5"	9 lbs	0.67 ft ²	16.75 lbs	150 mph

Model	Elements	Cable Type	Cable Length	Connector Type
BMXD690N	15	RG213	2 ft	N female

Technical Data

Maximum Power: 200 watts
Nominal Impedance: 50 ohms
VSWR: < 1.5:1 Nominal < 1.7:1 Maximum
Radiator Material: Aluminum 6061-T6
Mounting Method: Includes mounting hardware BWC1001A

* Dimension does not include antenna cable

**125 mph with 1/2" radial ice